



# ImageSAN Licensing Server

<i>Entering ImageSAN Licensing Server</i>	<i>2</i>
<i>Activating ImageSAN</i>	<i>4</i>
<i>Deactivating ImageSAN</i>	<i>6</i>
<i>Activating LAN Client Licenses</i>	<i>10</i>
<i>Deactivating LAN Client Licenses</i>	<i>12</i>
<i>Viewing Reports For Your Account</i>	<i>13</i>

# Entering ImageSAN Licensing Server

The ImageSAN licensing server is the place where you can activate and deactivate the SAN member or LAN client licenses you have obtained. To enter the ImageSAN licensing server, you should authenticate yourself with a login name and password. The ImageSAN licensing server uses as login name the sales order for your account. When you enter the licensing server for the first time, your account is without password. It is advisable to set a password for your account.

## To enter ImageSAN licensing server:

1. Go to <https://license.rorke.com>.

The ImageSAN licensing server appears.



Login

Login name:

Mac OS is a trademark of Apple Computer, Inc., registered in the U.S. and other countries. Windows is a trademark of Microsoft Corporation registered in the U.S. and other countries.

2. In the Login name field, enter your sales order number, and click Login.

If you enter the licensing server for the first time, you do not have to provide a password for your account. If you have set a password for your account already, the Enter Password screen appears.




Login

Enter password for sample\_order

Mac OS is a trademark of Apple Computer, Inc., registered in the U.S. and other countries. Windows is a trademark of Microsoft Corporation registered in the U.S. and other countries.

3. (if your account is password-protected) Enter the password for your sales order and click Login.

You have successfully entered the ImageSAN licensing server. The server displays information about your account - data created, number of licenses, licenses activated and remaining free licenses.



The screenshot shows the ImageSAN interface. At the top left is the 'imageSAN™' logo. To its right is a decorative banner with a world map and data lines. Below the logo is a navigation menu with buttons for 'Logout', 'Properties', 'Activate SAN', 'Activate LAN', 'Deactivate SAN', 'Deactivate LAN', 'Reports', and 'Download'. The 'Properties' button is highlighted.

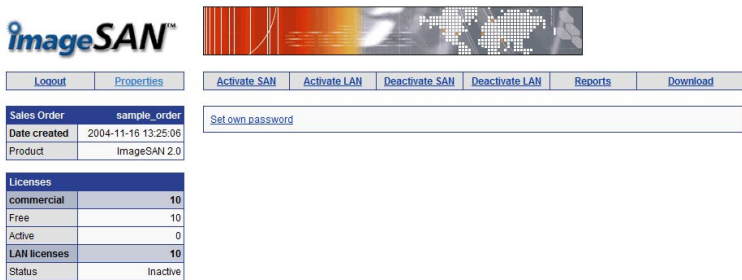
Sales Order	sample_order
Date created	2004-11-16 13:25:06
Product	ImageSAN 2.0

Licenses	
commercial	10
Free	10
Active	0
LAN licenses	10
Status	Inactive

**To set or change the password of your account:**

1. After entering the ImageSAN licensing server, click Properties in the server's Menu.

The Properties screen appears.



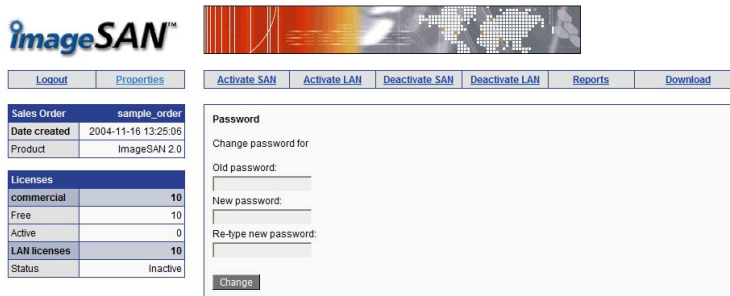
The screenshot shows the 'Properties' screen in the ImageSAN interface. It features the same logo and navigation menu as the previous screenshot. The 'Properties' button is now selected. A text input field labeled 'Set own password' is visible. The 'Sales Order' table and 'Licenses' table are also present, showing the same data as in the previous screenshot.

Sales Order	sample_order
Date created	2004-11-16 13:25:06
Product	ImageSAN 2.0

Licenses	
commercial	10
Free	10
Active	0
LAN licenses	10
Status	Inactive

2. Click Change Own Password (Set Password, if your account is without password).

The Password screen appears.



3. Enter the old and new password in the corresponding fields of the screen, and click Change.

## Activating ImageSAN

After installing ImageSAN on your computer you need to activate the product in order to achieve the full performance your SAN offers. Until your copy of ImageSAN is not activated, you will not be able to mount any SAN volume on your computer.

If you install an evaluation copy of ImageSAN, its license expires 30 days after activation. After the evaluation license expires, you will not be able to mount any SAN volume.

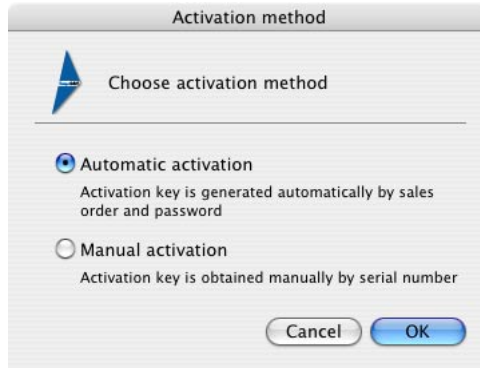
The activation procedure consists of two parts - obtaining an activation key on the licensing server and activating ImageSAN on the machine. To facilitate this process, ImageSAN offers two methods for activation - automatic and manual. Automatic activation connects you to the licensing server, generates an activation key for your copy of ImageSAN, and activates it on the computer. In case the machine on which you want to activate ImageSAN is not connected to the Internet, or you want to obtain all activation keys on one machine and then distribute them among the workstations on your SAN, you should use the manual activation method.

**Tip:** *You can use the read/write tests ImageSAN offers to verify you have successfully activated your copy of ImageSAN.*

**To activate ImageSAN manually:**

1. (Mac OSX and Windows) In the About tab of ImageSAN window, click Activate ImageSAN.

The Activation Method dialog appears.



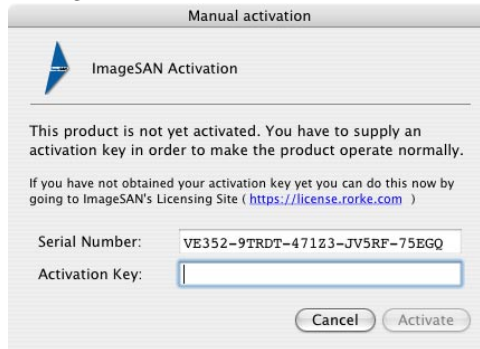
2. Do one of the following:

- (Linux) To get the serial number of ImageSAN on your computer, type **imagesan serial**

ImageSAN displays the serial number of your copy of ImageSAN.

- (Mac OSX and Windows) Select "Manual activation," and click OK.

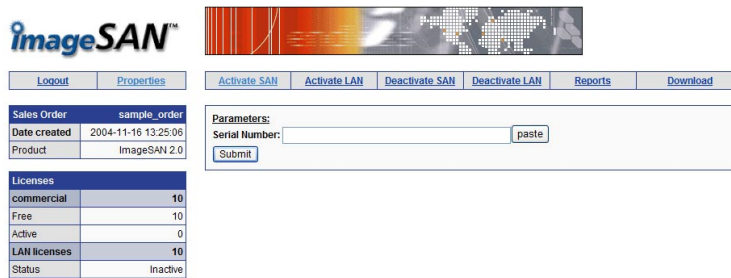
The Manual Activation dialog appears. It displays the serial number of your copy of ImageSAN.



3. Enter the ImageSAN licensing server. See “Entering ImageSAN Licensing Server” on page 2.

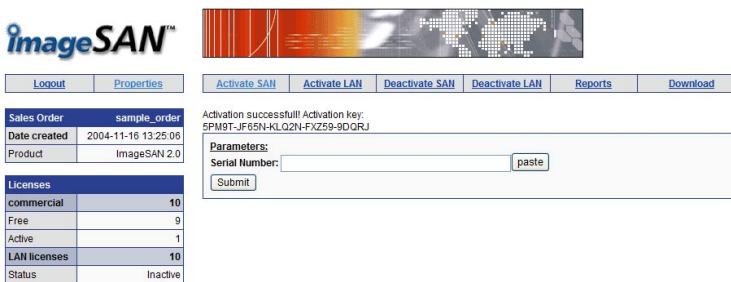
**4.** In the Licensing Server menu, click Activate SAN.

The Activate SAN page appears.



**5.** Paste the serial number for your copy of ImageSAN and click Submit.

ImageSAN licensing server generates an activation key.



**6.** Copy the Activation key.

**7.** Do one of the following:

- (*Mac OS X and Windows*) In the Manual Activation dialog, paste the Activation key generated for your copy of ImageSAN and click Activate.
- (*Linux*) To activate ImageSAN on your computer, type **imagesan activate <activation key>**

## Deactivating ImageSAN

In certain cases you need to uninstall and deactivate ImageSAN (for instance, when you need to return your ImageSAN activation key for replacement). When you want to transfer your ImageSAN license to another machine, you have to obtain a new activation key (as the activation key is granted per machine) and return the old one by deactivating your license for this computer. After deactivating ImageSAN on your computer, you will not be

able to activate it again and benefit from the SAN performance with the same key even if you reinstall ImageSAN.

The deactivation procedure of ImageSAN consists of two parts - obtaining a deactivation key and deactivating ImageSAN on the licensing server in order to obtain new activation key. You can choose between two methods for deactivating ImageSAN - automatic and manual. The automatic method automatically deactivates ImageSAN on your computer and on the licensing server. In case your computer is not connected to the Internet, you can also use the manual deactivation and deactivate ImageSAN on the licensing server later or from another machine.

### To obtain a deactivation key (Mac OS X and Windows):

**1.** Do one of the following:

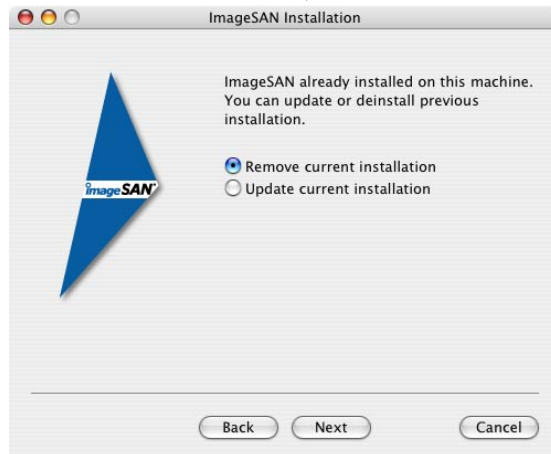
- (*Mac OS X*) In the Finder window, browse for and open ImageSAN.dmg.
- (*Windows*) Display the Control Panel, and double-click the Add/Remove Programs icon.

**2.** Do one of the following:

- (*Mac OS X*) After mounting ImageSAN.dmg, double-click ImageSAN\_InstallOSX.
- (*Windows*) Select ImageSAN, and click Change/Remove.

The Setup wizard starts.

**3.** Select “Remove current installation”, and click Next.



## ImageSAN Licensing Server

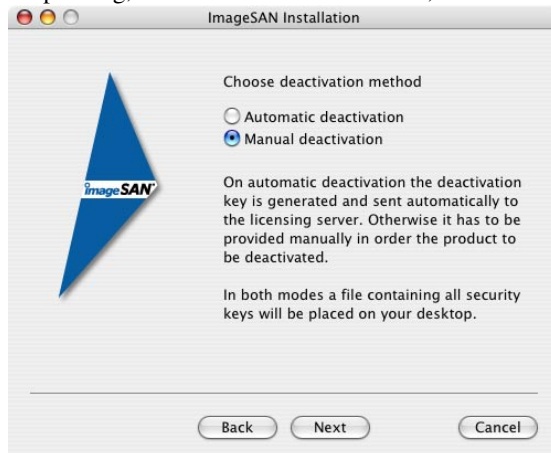
4. (Mac OS X only) Click Authorize to authorize setup with administrative privileges.

The Authenticate dialog appears.

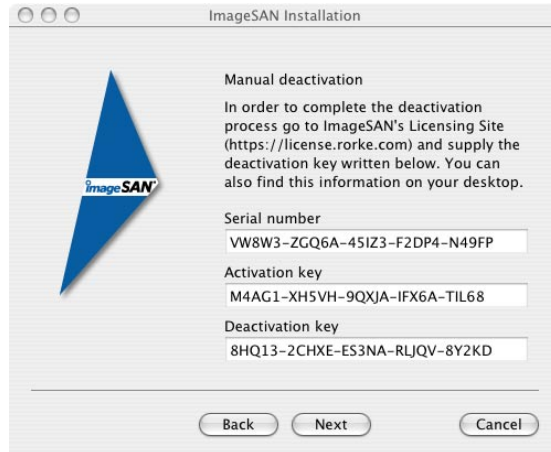
5. (Mac OS X only) Enter the user name and password, and click OK.
6. Enable “Permanently Deactivate ImageSAN,” and click Next.



7. In the Setup dialog, choose Manual Deactivation, and click Next.



ImageSAN Setup lists the serial number and activation key of your ImageSAN copy and generates a deactivation key.



**8.** Click Next.

A text file (ImageSAN\_Keys.txt) containing the serial number, activation and deactivation keys, is automatically saved in the home directory of the currently logged user.

**9.** When prompted, restart the computer.

**To obtain a deactivation key (Linux):**

**1.** Type:

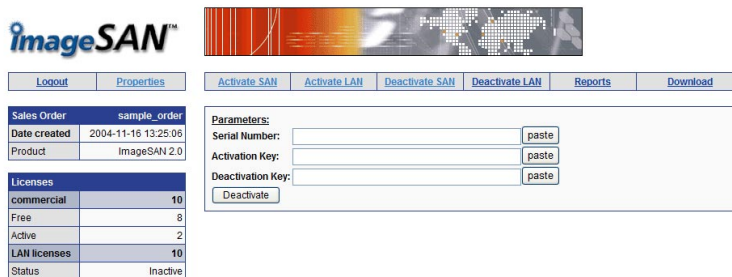
**`imagesan deactivate`**

ImageSAN displays the serial number, activation and deactivation keys of your copy of ImageSAN.

**To deactivate your copy of ImageSAN on the licensing server:**

1. Enter the ImageSAN licensing server. See “Entering ImageSAN Licensing Server” on page 2.
2. In the licensing server Menu, click Deactivate SAN.

The Deactivate SAN page appears.



3. Paste the serial number, activation and deactivation keys in the corresponding fields, and click Deactivate.

## Activating LAN Client Licenses

By default, ImageSAN has one LAN client license activated, which means that only one LAN computer at a time can access shared SAN volumes. In order to connect more LAN workstations to the SAN, you should activate LAN client licenses in the SAN definition from which you want to export LAN shares. All LAN client machines added to the definition will be able to access shares exported from it as long as their number does not exceed the number of licenses.

**Note:** *The definition in which you activate LAN client licenses should be created on a SAN Member computer.*

**Important:** *You should activate SAN Member licenses first, before activating LAN client licenses for a given sales order.*

**To activate LAN client licenses manually:**

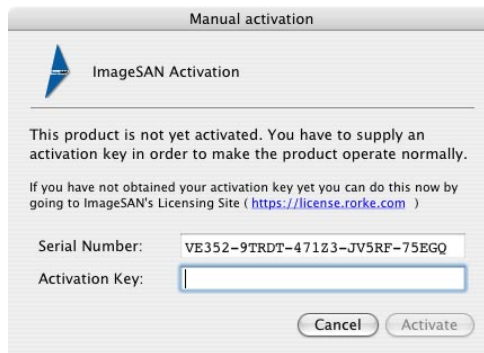
1. In the LAN Settings dialog, click Change.

The Activation Method dialog appears.



2. In the Activation Method dialog, choose Manual activation, and click OK.

The Manual Activation dialog appears. It displays the serial number of the selected SAN definition.

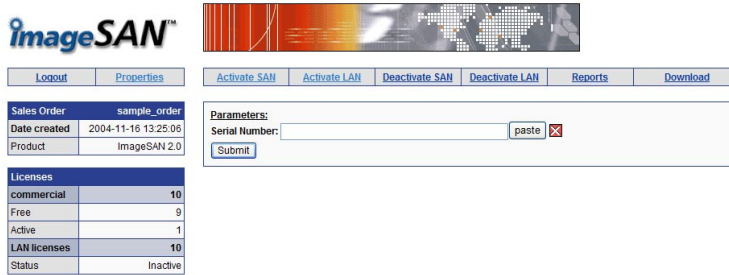


3. Enter the ImageSAN licensing server. See “Entering ImageSAN Licensing Server” on page 2.

**Tip:** You can click the address of the licensing server in the Manual Activation dialog to enter the licensing site.

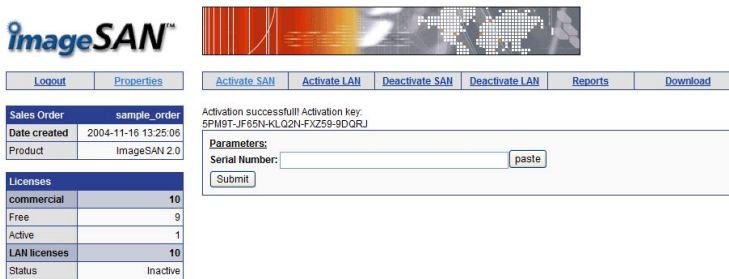
4. In the Licensing Server menu, click Activate LAN.

The Activate LAN page appears.



5. Paste the serial number of the SAN definition in which you want to activate LAN client licenses, and click Submit.

ImageSAN licensing server generates an activation key.




6. Copy the Activation key.
7. In the Manual Activation dialog, paste the Activation key generated for your LAN client licenses, and click Activate.  
The LAN client licenses are activated for this SAN definition.
8. In LAN Settings dialog, click OK.  
The SAN Settings dialog appears.
9. Click the Apply to apply all changes.

## Deactivating LAN Client Licenses

When you want to use the LAN client licenses for your sales order in another SAN definition, you should deactivate the licenses and activate them in the other SAN definition.

**To deactivate LAN client licenses:**

1. Enter the ImageSAN licensing server. See “Entering ImageSAN Licensing Server” on page 2.
2. In the Licensing Server menu, click Deactivate LAN.  
The Deactivate LAN page appears.



imageSAN™

Logout Properties Activate SAN Activate LAN Deactivate SAN Deactivate LAN Reports Download

<b>Sales Order</b>	sample_order
Date created	2004-11-16 13:25:06
Product	ImageSAN 2.0

Are you sure you want to deactivate lan licenses?

<b>Licenses</b>	
commercial	10
Free	8
Active	2
<b>LAN licenses</b>	<b>10</b>
Status	Inactive


3. Click Yes, to confirm that you want to deactivate the LAN client licenses.

**Viewing Reports For Your Account**

In the ImageSAN licensing server you can view detailed reports of all actions (activations, deactivations, etc.) you have performed in your account.

**To view a report for your account:**

1. Enter the ImageSAN licensing server. See “Entering ImageSAN Licensing Server” on page 2.
2. In the Licensing Server menu, click Reports.  
The Reports page appears.



imageSAN™

Logout Properties Activate SAN Activate LAN Deactivate SAN Deactivate LAN Reports Download

<b>Sales Order</b>	sample_order
Date created	2004-11-16 13:25:06
Product	ImageSAN 2.0

History  
[Activation Report](#)  
[Deactivation Report](#)  
[Activation History Report](#)

<b>Licenses</b>	
commercial	10
Free	8
Active	2
<b>LAN licenses</b>	<b>10</b>
Status	Inactive

3. In the reports page, do one of the following:
  - click History, to view a full detailed report of all actions for your account (licenses activated and deactivated, changed password, etc.)

## ImageSAN Licensing Server

- click Activation Report, to view a list of all currently active activations you have performed in your account.
- click Deactivation Report, to view a list of all deactivations you have performed in your account.
- click Activation History Report, to view a report of all activations (active and already inactive) and deactivations you have performed.