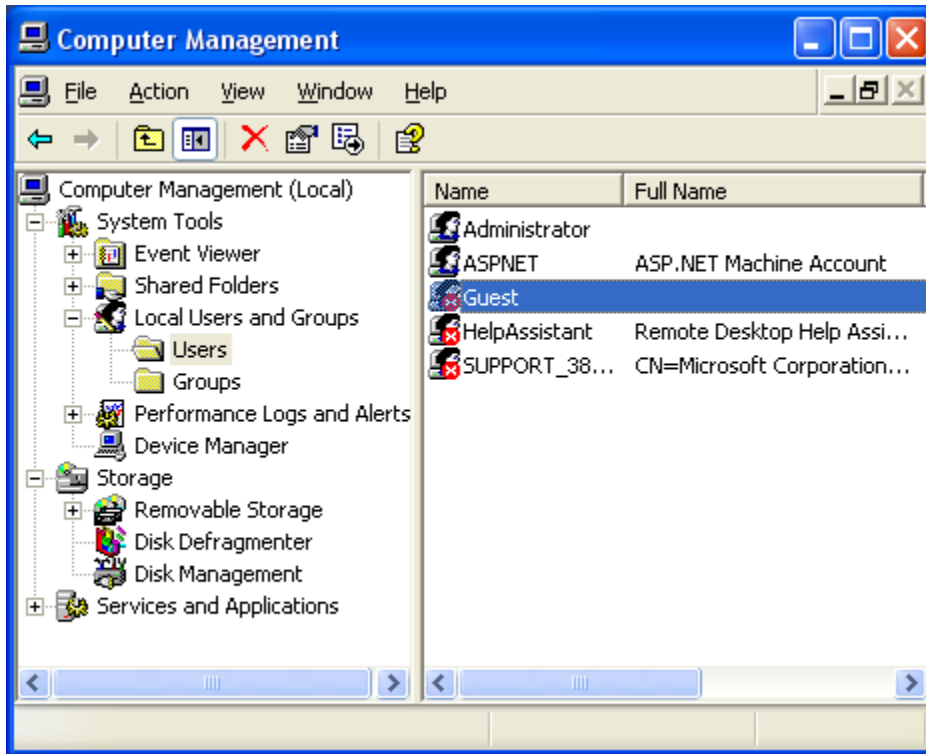


Setting up XP Service Pack 2 For Use With ImageSAN 1.x


ImageSAN 1.X is compatible with Service Pack 2 for XP but may need the following security settings within Windows XP to get it to function properly.

Disable the Guest Account:



Guest Properties [?] [X]

General Member Of Profile

 Guest

Full name:

Description:

User must change password at next logon

User cannot change password

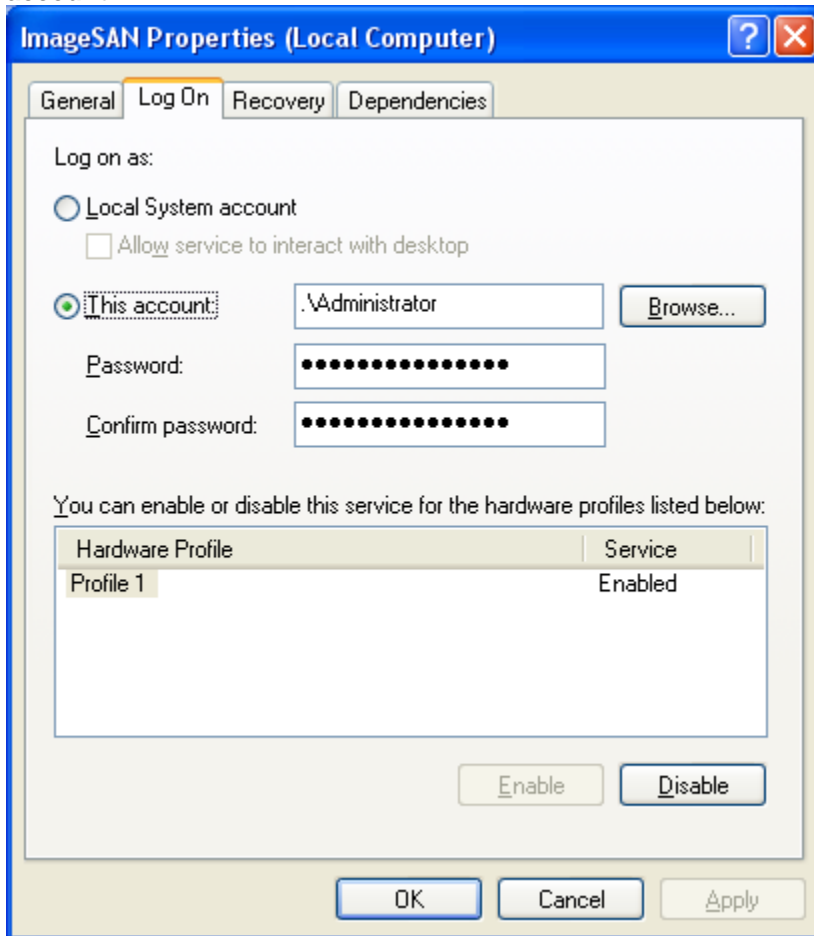
Password never expires

Account is disabled

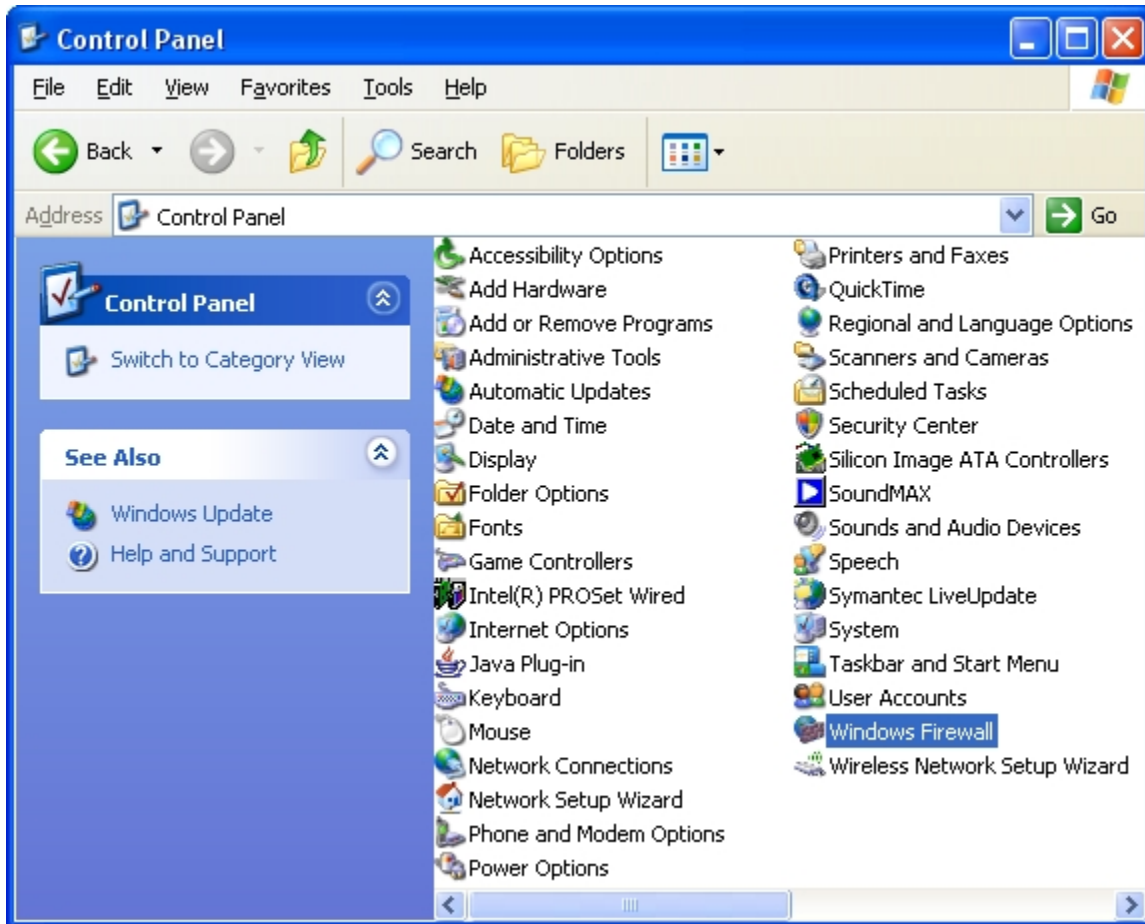
Account is locked out

OK Cancel Apply

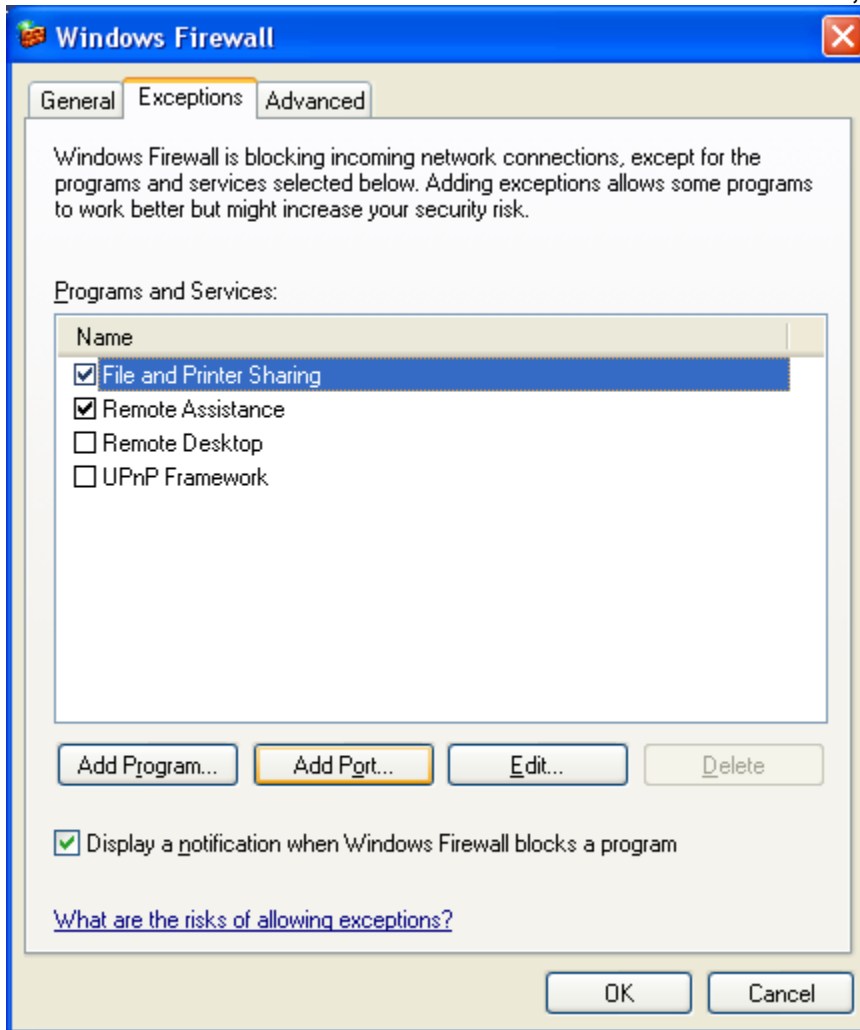
Go to the Services, Get properties of the ImageSAN service and set to the local Administrator account:



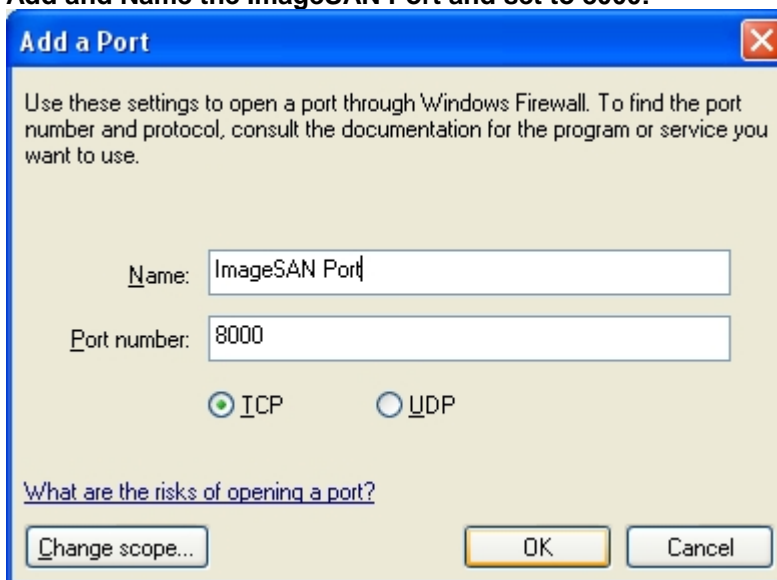
Go to Control Panel - Windows Firewall:



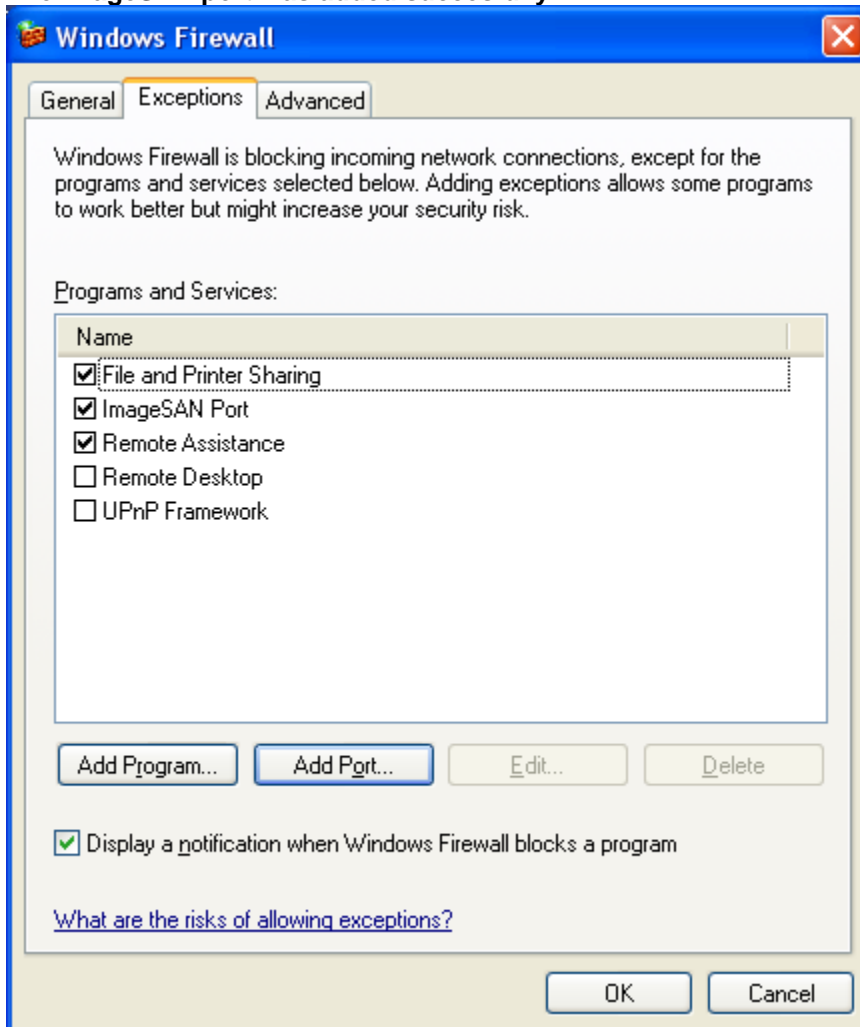
In the Windows Firewall Control Panel under the EXCEPTIONS Tab, click ADD PORT:



Add and Name the ImageSAN Port and set to 8000:



The ImageSAN port was added successfully:



ImageSAN should now function correctly. If not Call Rorke Data Tech Support.